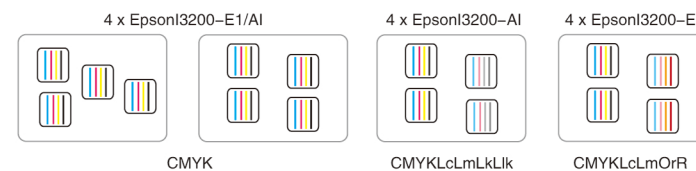


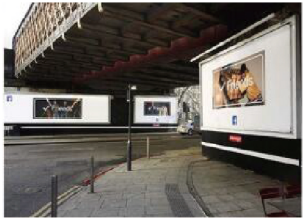
OR-1604X

Eco Solvent Printer / Water base Dye Printer (with 4 I3200-E1/A1 heads)



ORIC Water base Dye / Eco Solvent Ink





Our range of wide format inkjet printers matches our knack for engineering and quality with your desire for impeccable performance and careless production. You can produce roll-to-roll indoor prints and long term outdoor signs. Wide applications in light box posters, customized car stickers, background wall cloth, label printing, advertising sign, subway advertising, shopping mall advertising signs etc.

4Colors (EpsonI3200-A1/E1x4) Printing speed:

4pass-360x2400dpi	80 sqm/h
6pass-720x1800dpi	60 sqm/h
8pass-720x2400dpi	42 sqm/h

8Colors (EpsonI3200-A1/E1x4) Printing speed:

4pass-360x2400dpi	40 sqm/h
6pass-720x1800dpi	30 sqm/h
8pass-720x2400dpi	21 sqm/h

● Technical Specifications

Model		OR-1604X	
Print Head		4 i3200-E1 Print Heads	4 i3200-A1 Print Heads
Printing Technology		Piezoelectric Inkjet	
Acceptable Media	Width	1620 mm	
	Thickness	1 mm	
	Weight	60 kg	
Print Resolution		Maximum 2400 dpi	
Printing Width		210-1600 mm	
Ink	Type	Eco Solvent Ink	Water base Dye Ink
	Capacity	Continual Ink Supply System (3L ink tank)	
	Color	4 colors (Cyan, Magenta, Yellow, Black) / 8colors	
Media Heating System		Intergrated post heater & Infrared Dryer & Fan system	
Interface		LAN	
Power Supply		AC 220V±10%, 16A, 50/60 HZ	
RIP		Rinprint / PhotoPrint	
Machine size / weight (with bracket)		2670(W)x 740(D)x1613(H) mm / 300kg	
Package size / weight (with bracket)		2930(W)x760(D)x1170(H) mm / 350kg	
Power		Operating status:7500W	
Environment	Power on	Temperature:59F to90F [15C to 32C] (68 F [20C]/ Humidity: 35 to 80% (no condensation)	
	Power off	Temperature:41F to 104 F [5C to 40C]/ Humidity: 20 to 80% (no condensation)	
Accessories		USB cable, media clamp, manual, drain bottle, ink cartridges, RIP software, etc.	

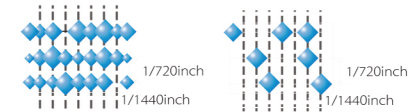
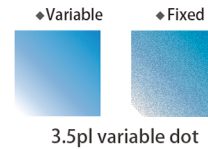
● Technical Characteristics

Intelligent inkjet printing technology and variable ink droplets ensure perfect printing output, greatly improve the printing speed, and meet the requirements of users for printing quality and speed.

1. You can choose to set up printing automatically or manually.
2. Feeding calibration can be used in the printing process.
3. You can choose to control the printer from the computer or printer panel.
4. Automatic continuous cleaning of ink tubes

High-speed micro piezoelectric inkjet printing technology

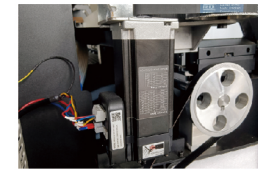
OR-1604X is equipped with a single-headed original EpsonI3200 printing heads, which adopts advanced board control technology, and the industrial-grade design ensures the durability of the print head.



Intelligent inkjet printing technology and variable ink droplets ensure perfect printing output, greatly improve the printing speed, and meet the requirements of users for printing quality and speed.



Stable 3L bulk system ensures amazing printing speed



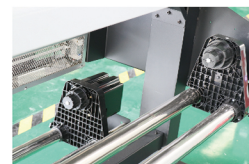
High quality DC servo motor with good stability and long life.



THK high-precision mute rail.



Automatic moisturizing cleaning assembly ensures the stability of head cleaning and improves working stability.



External power supply, intelligent rolling system



New pinch roller structure of three in group brings more stable feeding precision.