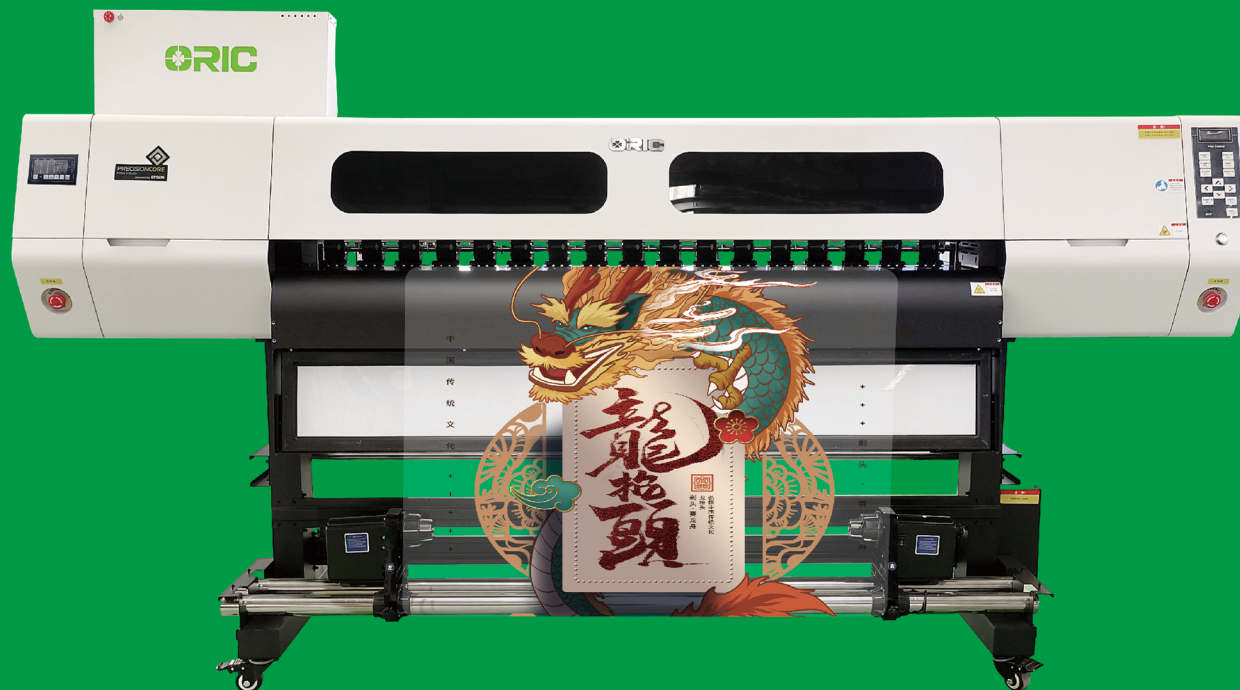


# OR-1603E UV

LED-UV Inkjet Printer (3200-U1x2)

CMYK+W+CMYK+Scrub

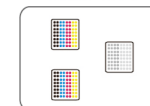
Multilayer printing  
to build layered



ORIC UV Ink



I3200-U1x3



CMYK / CMYK+W+CMYK / Scrub



One machine for multiple printing solutions under different color modes, can meet requirements from different customers. It can also replace some high-end ecosolvent printers which can be efficient and environmental friendly.

3xEpson3200-U1 (CMYK+W+CMYK / CMYK+W) :

720x900dpi	11 sqm/h
720x1200dpi	7 sqm/h

2xEpson3200-U1 (CMYK) :

720x900dpi	21 sqm/h
720x1200dpi	12 sqm/h

Epson3200-U1 (Scrub) :

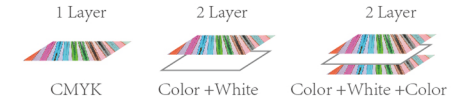
720x900dpi	6 sqm/h
720x1200dpi	3 sqm/h

## • Technical Specifications

<b>Model</b>	<b>OR-1603E UV</b>	
<b>Print Head</b>	3 Epson3200-U1 Print Heads	
<b>Printing Technology</b>	Piezoelectric Inkjet	
<b>Acceptable Media</b>	Width	1620 mm
	Thickness	1 mm
	Weight	60 kg
<b>Printing Width</b>	1600 mm	
<b>Ink</b>	Type	UV Ink
	Capacity	Continual Ink Supply System ( 1.5L ink tank )
	Color	CMYK / CMYK+W / CMYK+W+CMYK / Scrub
<b>Printing Resolution</b>	Maximum 2400 dpi	
<b>Ink Curing Unit</b>	Dual UV LED Lamps (Water-cooling UV lamp)	
<b>Interface</b>	Gigabit network port	
<b>Power Supply</b>	AC 220V ±10%, 16A, 50/60 HZ	
<b>RIP</b>	Rinprint / PhotoPrint	
<b>Dimensions(with stand)</b>	2767(W)x740(D)x1571(H) mm	
<b>Weight(with stand)</b>	300 kg	
<b>Package Dimensions</b>	2930(W)x760(D)x1170(H) mm )	
<b>Package Weight</b>	350 kg	
<b>Environment</b>	Power on	Temperature:59F to90F [15C to 32C] (68 F [20C]/ Humidity: 35 to 80% (no condensation)
	Power off	Temperature:41F to 104 F [5C to 40C]/ Humidity: 20 to 80% (no condensation)
<b>Accessories</b>	USB cable, media clamp, manual, drain bottle, ink cartridges, RIP software, etc.	

- High efficient uv-led technology;
- International environmental standard UV inks;
- Odorless, LESS environmental impact;
- 1.6m wide, small size, high production speed
- Unique Color + white + Color printing mode.

### 1-3 Layers printing mode optional



### 3Layers printing the output is more delicate

**Third Layer**  
The color layer first caught in eyes

**Second Layer**  
White layer that brightens the color ink

**First Layer**  
The color layer that emerges when lighted



With the interior light on, this three layers printing technology ‘Color + White +Color’ , can achive the magically changing effect of the patterns from backlight.The ability of switching the patterns through day and night, external and interiorfully reflecting the performance techniques used in new advertising era, thus increasing the added value of your advertising.

One machine for multiple printing solutions under different color modes ,can meetrequire ments from different customers .It can also replace some high-end ecosolvent printers which can be efficient and environmental friendly.



Transparent sticker decoration effect



Contrast effect before and after lighting



1.5L bulky ink bottle with lack of ink alarm system represents the advanced concept of industrial application



High quality imported THK high precision guide rail



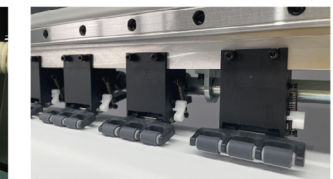
The automatic moisturizing and cleaning system not only protects the print head, but also ensures the smoothness of the ink -flow .



External power supply, intelligent rolling system.



LED backlight



Adjustable pinch rollers