

# OR-1602E UV

Four color, white + color UV roll to roll printer (3200-U1x2)

CMYK+W

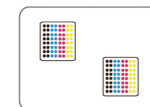
Multilayer printing  
to build layered



ORIC UV Ink

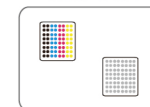


I3200-U1x2



CMYK

I3200-U1x2



CMYK+W



APPLICATIONS : light box posters, car stickers, advertising hoardings, golden and silver paper, leather printing, high-end gift boxes, food packaging, labels, operation panel and switch printing, etc.

2xEpsonI3200-U1 (CMYK) :

2xEpsonI3200-U1 (CMYK+W) :

720x900dpi	21 sqm/h
720x1200dpi	12 sqm/h

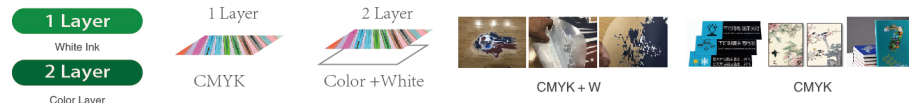
720x900dpi	11 sqm/h
720x1200dpi	8 sqm/h

## ● Technical Specifications

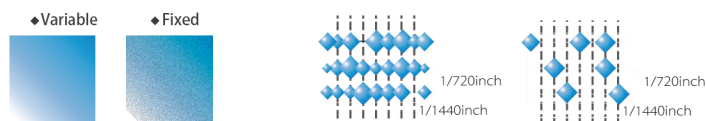
Model	OR-1602E UV	
Print Head	2 EpsonI3200-U1 Print Heads	
Printing Technology	Piezoelectric Inkjet	
Acceptable Media	Width	1620 mm
	Thickness	Maximum 0.039 mil(1 mm)
	Weight	60 kg
Printing Width	1600 mm	
Ink	Type	UV Ink
	Capacity	Bulk ink supply system with 500ml ink tank
	Color	CMYK / CMYK+W
Printing Resolution	Maximum 2400 dpi	
Ink Curing Unit	Water-cooling UV lamp	
Interface	Gigabit network port	
Power Supply	AC 220V±10%, 16A, 50/60 HZ	
RIP	Rinprint / PhotoPrint	
Dimensions(with stand)	2585(W)x685(D)x1482(H) mm	
Weight(with stand)	240 kg	
Package Dimensions	2600(W)x760(D)x760(H) mm )	
Package Weight	300 kg	
Environment	Power on	Temperature:59F to90F [15C to 32C] / Humidity: 35 to 80% (no condensation)
	Power off	Temperature:41F to 104 F [5C to 40C] / Humidity: 20 to 80% (no condensation)
Accessories	USB cable, media clamp, manual, drain bottle, ink cartridges, RIP software, etc.	

- Leadshine DC Servo Motor;
- THK high precision mute rail;
- Igus mute drag chain, quite working environment guaranteed;
- Automatic up-and-down capping station, protects the print head more effectively.

## 2 Layer printing technology for color conversion



## Two Epson I3200-U1 heads array



Minimal 3.5pl Variable Ink Droplet

- Equipped with two 3200 print heads, 3.5pl ultra-small ink droplets
- 1.6m UV roll to roll printer dedicated for white + color printing
- Scientific head array, high-precision bottom plate, craftsmanship of quality
- Light weight and compact design, saves workshop space



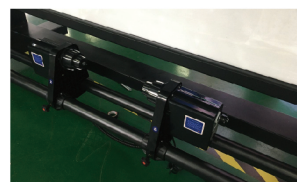
500ml large capacity ink supply system



High quality imported THK high precision guide rail



Moisturizing cleaning assembly



Automatic take-up



LED backlight



Adjustable pinch rollers